

## DEAF AND HARD OF HEARING SERVICES' GOALS FOR 2010

Time goes by fast! We are already going into 2010. As a non-profit organization, we take our services seriously and evaluate our goals in order to serve you better as an individual person and as a community united together for the common good, whether it's a deaf person, partner, investor, board member, or a person who cares about the deaf or hard of hearing in Western Michigan.

**Job Placement:** We expanded to Battle Creek, Kalamazoo and Holland, after starting with Grand Rapids in 2007. Our goal is to assist more people in finding jobs through Michigan Rehabilitation Services and expanding our job development resources.

**Mental Health:** We are continuing our partnership with Pine Rest to provide mental health coordination to 23 or more deaf and hard of hear-

ing individuals in Kent Co. We started consulting for supported employment and hope to increase funding for NA/AA meetings and resources.

and donors to expand services for lower-income hard of hearing individuals who need equipment or hearing aids to fully participate in society.

*Seasons greetings  
and a safe holiday  
from the DHHS staff!!*

**Interpreter Referral:** With the MI BEI exams coming, we are offering more workshops and training for those who aim to take the exam and pass. We are also exploring more contracts with businesses and organizations to provide interpreting services.

**Hearing Assistance Outreach:** We are seeking grants

**Additional goals:** Seeking funds for the Muskegon regional office, planning Kids Kamp for summer 2010, and performers for spring and fall season to bring arts and culture to Western Michigan.

If there are any ideas you would like to share with the agency, or become a partner or donor, contact us!

### Donations needed for DHHS!

**Library:** We are in need of books or videos about ASL, deaf culture, interpreting, hearing loss, mental health, and CODAs. Our library is growing, and we experience a high volume of check-outs!

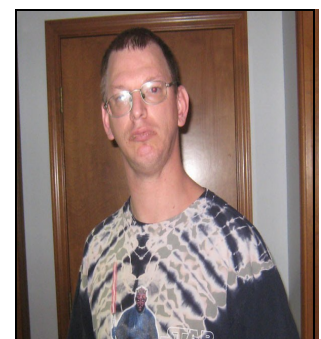


**Office:** We need round tables, stackable chairs and supplies! Those are not covered by most of our programs or grants.

**Building:** We are in need of generous support to pay our utilities on a monthly basis! Contact us if you would like to support us for as little as \$20 a month.

### VOLUNTEER OF THE QUARTER

*Chad Andringa*



*Chad helps us every week with building maintenance and cleaning. Thank you, Chad!*

## What to do if you are refused an interpreter?

We probably hear it several times a year: "I don't think you need an interpreter. We are fine communicating back and forth using our lips or pen and paper."

Or: "Why don't you bring a friend? I don't think we need to hire an interpreter."

If you are a deaf or hard of hearing person requesting an interpreter for an appointment or a meeting and you get these types of responses, then your

rights are being violated by the ADA.

Unfortunately, when deaf or hard of hearing people get these responses, they do not know where to turn or how to voice their rights. They accept the circumstances and move on. But then, the doctor or lawyer or teacher that says these things do not learn anything. They think it is fine and do it again next time.

It is up to us to inform them of our rights. If you are denied an interpreter when you request one, visit our agency at 4328 Kalamazoo Ave S.E., Grand Rapids, MI 49508 and ask Sandy Faulkner for advice, or go to the Civil Rights web site to fill out a complaint. Sandy will assist you with the form.

Your rights as an equal citizen are important to us!

**BOARD****Debra Buckley**

President

**Nancy Gingery**

Vice President

**David Vander Kolk**

Secretary

**Janine Byler**

Treasurer

**Beverly Chesebro**

Fundraising Chair

**Jim Siver**

Governance

**Bill Creswell****Sandy Faulkner****Roman Karpinski****Mary Anne Schneider****STAFF****Katie Prins**

Executive Director

**Deb Atwood**

Business Manager

**Nan Soper**

Interpreter Referral

Specialist

**Bethany Perry**

Administrative

Assistant, Grand

Rapids

**Donielle Potts**

Administrative

Assistant, Muskegon

**Dennis Barth**

Hearing Assistance

Outreach Specialist I

**Cindy Hall**

Hearing Assistance

Outreach Specialist II

**Mark Harrison**

Supports Coordinator

**Karen Stephenson**

Job Placement

Specialist

**DHHS raises \$1,000 through movie event**

"Gerald," a newly-released movie produced and directed by ASLFilms, was shown at Celebration Cinema on October 10.

The movie was part of a DHHS fundraiser weekend. There was an Euchre tournament the evening before at DHHS, with 24 participants and we raised \$330 for Silent Celebration! The proceeds from the movie went to DHHS' programs. We were able to raise \$1,000!

"Gerald" is about a deaf man, Corey, (Russell Harvard) who is planning a wedding with his

fiancé, Maria (Micaela Paulone) when he discovers he has a grandfather he never knew he had. His grandfather is deaf and autistic, and is about to be kicked out of his home. Corey



invites his grandfather to live with him but, along the way, Corey uncovers some secrets

that changes his life.

The evening was a wonderful success, with 120 people turning in for the event at the Celebration Cinema and checking out the DHHS booth. The Cinema even donated an additional \$500 since they were inspired by how many people came to support the event.

Angela Savage, Henry McLaughlin, and the DHHS fundraising committee worked hard in spreading the word and encouraging people to attend. Many thanks to their efforts!

**Contribute electronically to DHHS**

DHHS is offering an **Automatic Offering Plan**, a safe, convenient and reliable way to make your contributions using an electronic transfer. Your contribution will automatically be withdrawn from a regular checking account at any bank or credit union. It is 100% safe and you can cancel or change your contributions at anytime. Best of all, it saves you time, and helps Deaf and Hard of Hearing Services keep our budget on track throughout the year. Contact Deb Atwood, our Business Man-

ager, for more information at 616-732-7358 ext.202.

It is easy to sign up, easy to change and makes people feel good knowing their contributions are directly going to DHHS. No need to write checks or give credit card number anymore!

You can enroll in the Automatic Offering Plan with DHHS anytime and allow a few weeks for automatic transactions to begin. All we will need is the checking and routing number so it can be

deducted directly from your account when your paycheck goes in. You will receive a letter explaining the process and confirm how much you want deducted.

You can change the amount at anytime by calling DHHS as soon as possible and we will change the amount for you with your bank.

Becoming a part of this plan helps you give back to DHHS and the community with greater results!

**Save the Dates!**

**November 14** - RID-certified interpreter Misti Ryefield is giving a classifier workshop at DHHS. *25 spots only.*

**November 20**—MI BEI public forum at DODHH.

**December 1**—MRS job placement workshop at DHHS led by Karen Stephenson.

**December 5**—ASL Expo 2009 in Lansing, MI.  
[www.aslexpo.com](http://www.aslexpo.com).

**January 16**—Michigan Deaf Association (MDA) meeting at DHHS in Grand Rapids from 9-5. Contact Scot Pott for more information.

**February 6** - Greater Grand

Rapids Association for the Deaf and Hard of Hearing is having a Valentines' Dance at American Legion Hall in Walker.

**May 12**—Day at State Capitol from 10 a.m.-2 p.m.

**June 12** - DHHS' annual Silent Celebration at Johnson Park in Walker!

**Fall 2010** - DHHS annual gala

## DHHS - Muskegon open for services!

Deaf and Hard of Hearing Services has announced a regional presence in Muskegon, serving the deaf and hard of hearing population, effective October 1, 2009. DHHS is serving Muskegon, Oceana and Ottawa counties.

Deaf and Hard of Hearing Connection (D/HHC), a program under MOKA Corporation, was relinquished to DHHS after careful consideration because a regional resource center was still much needed for people in the greater Muskegon area to receive assistance and services.



Donielle Potts, Admin. Assistant

“We at DHHS look forward to collaborating with community partners to create programs for deaf and hard of hearing individuals and families,” said Katie Prins, DHHS’ executive director who is overseeing both regional offices. “Our staff in Muskegon, including Donielle Potts, who joined us

from D/HHC, as an administrative assistant, has shown great interest in improving services for this regional entity.”

DHHS—Muskegon as it is now called, is located at 86 Seaway Drive, Muskegon, MI 49444 between Seaway and Hoyt. The office hours are Monday through Friday from 9 a.m. to 4 p.m. and staff may be reached locally by 231-733-6245 (v), 231-733-6245 (fax) and info@deafhhs.org (e-mail). The DHHS—Muskegon office is currently providing interpreter referral service, American Sign Language classes, and advocacy matters. Any inquiries about partnerships or programs may be directed to Katie Prins at kprins@deafhhs.org or 616-732-7358 ext. 202.

## DID YOU KNOW THIS ABOUT OUR DHHS STAFF?....

**Nan Soper** coordinates our interpreter referral service out of two offices now—Muskegon and Grand Rapids. Making interpreter requests has become more accessible!

**Mark Harrison** enjoys running and participating in marathons around Western Michigan.

**Deb Atwood’s** youngest son Mike is deaf and plays football and track for Gallaudet University. Mike grew up in Grand Rapids.

**Katie Prins** is a writer at heart and is editing some books for (fingers crossed!) publication.

**Bethany Perry and Donielle Potts**, our administrative assistants at the Grand Rapids and Muskegon centers, are preparing to take the MI BEI exams. We wish them the best of luck!

**Dennis Barth** and his wife Jackie do beautiful gardening and have extensive knowledge about plants and flowers. They did an excellent job with landscaping around the DHHS building.

## New interpreter exam creates statewide impact

The Michigan Board of Evaluation on Interpreters (MI BEI) exam is in effect between October 2009 and June 2012 for all National Interpreter Certification (nationwide) interpreters and Quality Assurance (statewide) interpreters. The test is held to a higher standard for all interpreters who take it, regardless of experience or length of interpreting profession in the community. The MI BEI is modeled after Texas BEI.

Raising the bar benefits the deaf

and hard of hearing community in the long run, receiving the most appropriately qualified interpreter for their needs in any setting and dividing the interpreting jobs in classes where their skills fit the best in.

It is creating a statewide impact on the number of interpreters that will be available if they pass the BEI exam, and Deaf and Hard of Hearing Services already feels the impact on the agency. The numbers in our pool will change, but we are working to

offer monthly workshops for QA interpreters who will take the exam and educational training for Interpreter Training Program students who received their certification and prepare for the BEI exam.

DODHH Director Sheryl Emery is speaking in different parts of the state about the MI BEI exam in Nov and Dec. Contact the DODHH office at www.mcdc-dodhh.org or for more information.

## How to speak to a person with a hearing loss



Dennis Barth and Cindy Hall are here to assist you with advice and info.

- Do not shout at the hard of hearing person. Rather, ask them what their preferred mode of communication is—eye contact, clear lip movement, and/or moving to an area with least background noise as possible.
- Include them as much in the conversation. Do not assume they lipread everything or they are fine just standing there while everyone is talking. They may feel lost and confused.
- They come first as a person, not their hearing loss. Talk about anything you have in common, unless they want to share about their hearing loss.
- In a public setting, make sure they have the appropriate accommodations—PockeTalker, hearing aids, FM system, or Loop system. For more information, contact Dennis Barth at dbarth@deafhhs.org.

## Deaf and Hard of Hearing Services

**Mailing address:**  
P.O. Box 8812  
Kentwood, MI 49518-8812

**Grand Rapids**  
616-732-7358 (v)  
616-828-0186 (vp)  
616-732-7365 (fax)

**Muskegon**  
231-733-6208 (v)  
231-683-4028 (vp)  
231-733-6245 (fax)

E-mail: [info@deafhhs.org](mailto:info@deafhhs.org)

Communication begins with you.

Check us out at  
[www.deafhhs.org](http://www.deafhhs.org)

# Contributing to DHHS' Capital Campaign

## Capital campaign information

DHHS has a two-year land contract for our building at 4328 Kalamazoo Ave S.E., Grand Rapids, MI. It is a community center and human services agency, with 2,500-3,000 people that walk through our doors on a yearly basis. We are raising money to pay down the building and become ours. It will be the *first and only* community center for the deaf and hard of hearing in Western Michigan.

**How much does DHHS need for the campaign?** Between \$100 to \$10,000 individually from you before March 1, 2010. The goal of our total amount is \$20,000 from you so we can reach \$40,000 through foundations using matching funds from the community. It all starts with you *first!*

**Ways of donating:** [www.deafhhs.org](http://www.deafhhs.org) under "Get Involved," deduct from paycheck on monthly basis, sponsor a table at the 2010 gala, or write a check to our P.O. Box address. Can be monthly or one-time.

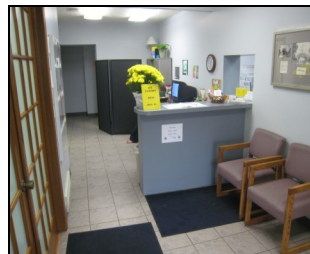
## FAQs

**How much should I give?** However much as your heart desires.

**Can I become an anonymous donor?** Yes!

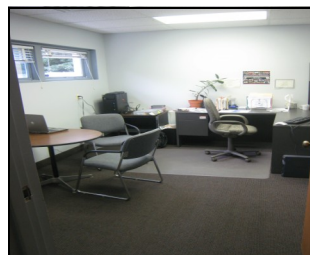
**Can I break it down monthly instead of one big check?** Yes!

**How do we know you need more money to raise throughout the year?** We communicate through a quarterly newsletter and a thermometer on our web site that follows closely how much we raised and how much is needed.



What you will benefit from contributing:

Giving back to community  
Plaque with your name on wall  
(for non-anonymous donors only)

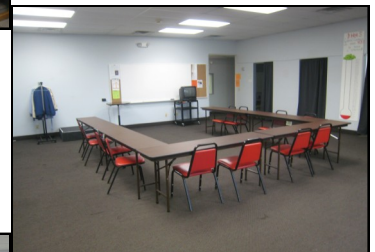


Ways to contribute towards the campaign:

[www.deafhhs.org](http://www.deafhhs.org)

Call 616-732-7358

Mail a check to DHHS



How DHHS will benefit from your contribution:

Reduces monthly mortgage by half  
Money invested back into programs  
Long-term stability with services